



Liz

Alvechurch Marina £49,950

A 65ft 4 berth Arcrite cruiser stern narrowboat.

A very spacious and well presented narrowboat which has been undergoing refurbishment and now just needs a few finishing touches to make her a fully equipped floating home.

The exterior is mainly painted in Royal Blue, with contrasting red at the stern and bow. There are cratch covers to stern and bow for extra protection.

Entering the boat through a door to the side of the stern, there is a very large open plan room, currently furnished with beautiful wood block galley units with inset double sink and drainer plus a full sized gas oven with hob and grill. To either side of the galley area are open spaces that could be transformed into comfortable saloon areas, or perhaps a dining room/dinette which could convert into a double bed for sleeping. The room is fitted with 4 radiators, and there is a work desk at one end, and a bank of seating at the other.

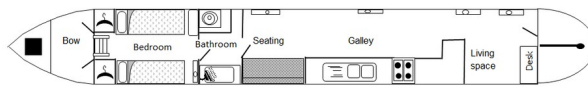
A very stylish walk-through bathroom is next, with a bath and shower to one side and vanity unit to the other. There is space here to install a toilet of your choice.

Finally, the bedroom contains two single berths which can be converted into a king bed, with plenty of wardrobes, another radiator, and doors leading up to the neat covered bow deck.

Liz was issued with a new Boat Safety Certificate in 2022, at which time the engine was also serviced.

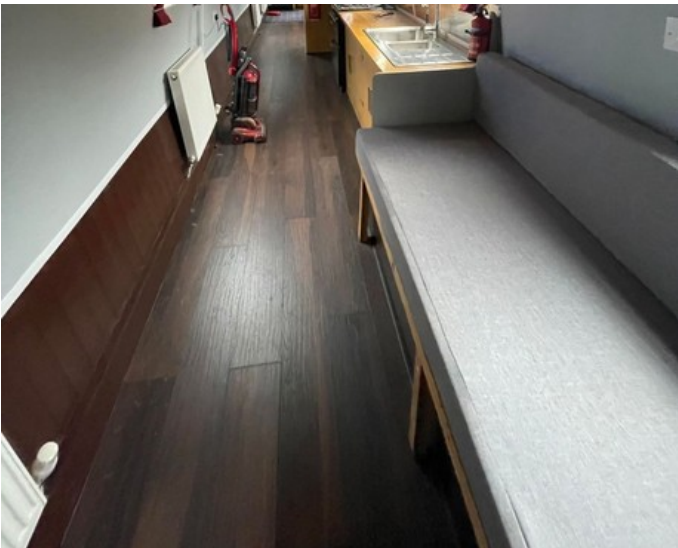
For enquiries or an appointment to view, please contact Alvechurch Marina on 0121 445 1133.

Scan the QR code to view online



Overall length	65 feet
Beam	6 feet 10 inches
Draft	--
Headroom	--
No. of berths	4
Style of stern	Cruiser
BSS certificate expiry	4th September 2026
Built	Arcrite
Fitout	In 2018 by Barnaby Reeve
Base	Steel 6mm
Hull	Steel 5mm
Cabin	Steel 5mm
Engine	BMC 1.8
Gearbox	--









General

General

Name	Liz
BW index number	72182
Safety certificate	YES
BSS certificate expiry	4th September 2026
BSS certificate number	BSSER-443623/22
Built	Arcrite
Location	Alvechurch Marina
Price	£49,950

Berths

No. of Berths	4
Double beds	1 or
Double beds (temp)	1
Single beds	2
Single beds (temp)	--

Size

Overall length	65 feet
Overall beam	6 feet 10 inches
Overall draft	--
Style of stern	Cruiser

Structure

Manufacturer

Manufacturer	Arcrite
Hull ID No.	--
Build date	--

Material

Base	Steel
Hull	Steel
Cabin side	Steel
Roof	Steel

Original steel thickness

Base	6mm
Hull	5mm
Cabin	5mm

Hull blacking

Last hull blacking	2018
Where	Larford Lane

Anodes

Fitted	YES
Date fitted	2020
Size	--
No. of anodes	4





Running gear

Engine

Make	BMC
Model	1.8
Year	--
Fuel	Diesel
Cooling	Skin tank
Hours	--
Last serviced date	2022
Last serviced by	--

Gearbox

Make	--
Model	--
Year	--
Reduction	--
Coupling	--
Shaft diameter	--
Propellor size	--

Capacities

Fuel	200 litres
Water	400 litres
Gas type	Propane

No. of gas cylinders	2
Gas cylinder size	13kg

Interior

Fitted

Fitted by	Barnaby Reeve
Date fitted	2018

Materials used

Floor	Laminate
Hull sides	--
Cabin sides	--
Deckhead	--
Bulkheads	--
Fittings	--





Equipment

In the galley

Cooker type	Freestanding oven, hob and grill
Cooker model	Logic
Fridge type	None
Fridge model	--
Other	--

Heating

Type	Central heating
Make	Eberspacher
Model	--
Fuel	Diesel
Other remarks	Radiators throughout boat

Hot water

Type	Calorifier
Make	Eberspacher
Model	--
Fuel	--
Other remarks	--
Additional heating	--

In the bathroom

Bath	Yes
Shower	Yes
Hip bath	--
Basin	Yes
Toilet type	None
Toilet make	--
Toilet model	--
Toilet tank capacity	--
Toilet remarks	--

Electrical systems

DC voltage	12v
No. of batteries (start)	1
No. of batteries (domestic)	4
Split charging	--
Other	Galvanic isolator fitted.

240 volt electrical systems

Inverter make	--
Inverter rating	--
Generator make	--
Generator rating	--
Shoreline	NO
Other	--

Other

Additional information

--

