



SQ II

Kings Orchard Marina

£70,000

A 57ft 2012 Jonathan Wilson 2 berth semi-traditional stern narrowboat.

SQ II is a beautifully presented narrowboat, perfect for couples for holidays or as a floating home.

Painted in an eye-catching orange livery with stunning brass detail, this boat has a contrasting black cratch cover at the bow and pram cover over the seating of the semi traditional stern.

Upon entering the boat from the stern, you enter the rear cabin which has a neat storage system. The double bedroom follows this.

Separated by sliding doors is the walk through bathroom. This is fitted with a glass shower cubicle, cassette toilet and a vanity unit.

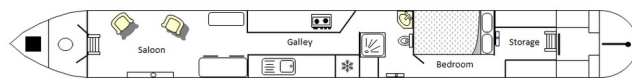
An attractive galley follows this. This comes equipped with a 2 burner hob, fridge, microwave oven, washing machine and a sink and drainer unit. There is also plenty of worktop space and storage.

The last cabin along is the saloon. This comes with a table and stools for dining and 2 easy chairs.

SQ II has central heating throughout and her full warm wooden interior adds to the cosy feel.

SQ II comes with a Boat Safety Certificate valid until February 2028.

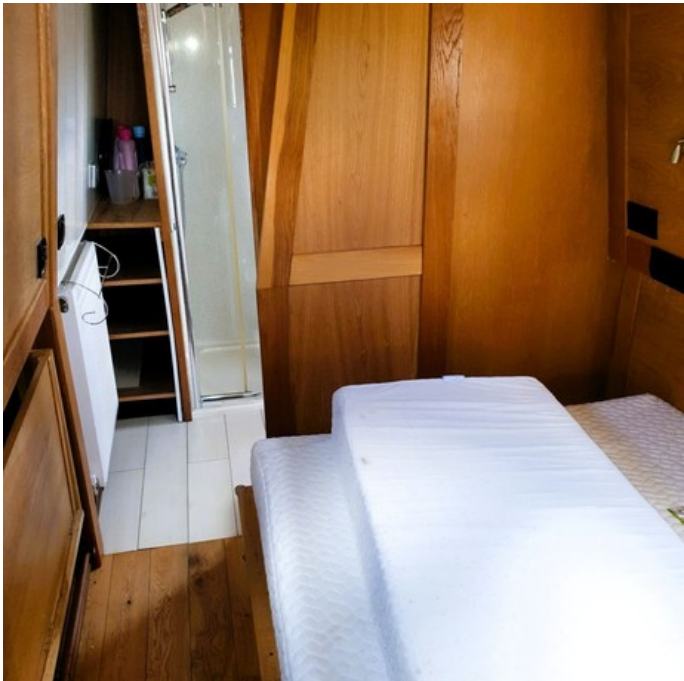
Viewing of this boat comes highly recommended. To arrange, or for further information, please contact Kings Orchard Marina on 01543 433608.

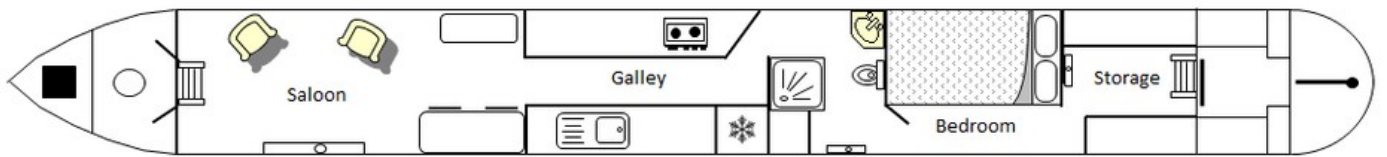


Overall length	57 feet
Beam	6 feet 10 inches
Draft	2 feet 2 inches
Headroom	--
No. of berths	2
Style of stern	Semi-Traditional
BSS certificate expiry	11th February 2028
Built	In 2012 by Jonathan Wilson
Fitout	In 2013 by Audlem Boats
Base	Steel 10mm
Hull	Steel 6mm
Cabin	Steel 4mm
Engine	Electric motor
Gearbox	--

Scan the QR code to view online









General

General

Name	SQ II
BW index number	520746
Safety certificate	YES
BSS certificate expiry	11th February 2028
BSS certificate number	BSSER-474966/24
Built	In 2012 by Jonathan Wilson
Location	Kings Orchard Marina
Price	£70,000

Berths

No. of Berths	2
Double beds	1
Double beds (temp)	--
Single beds	--
Single beds (temp)	--

Size

Overall length	57 feet
Overall beam	6 feet 10 inches
Overall draft	2 feet 2 inches
Style of stern	Semi-Traditional

Structure

Manufacturer

Manufacturer	Jonathan Wilson
Hull ID No.	JWLTD000254/11
Build date	2012

Original steel thickness

Base	10mm
Hull	6mm
Cabin	4mm

Anodes

Fitted	YES
Date fitted	2023
Size	--
No. of anodes	4

Material

Base	Steel
Hull	Steel
Cabin side	Steel
Roof	Steel

Hull blacking

Last hull blacking	2023/10
Where	Droitwich Spa Marina





Running gear

Engine

Make	Electric motor
Model	--
Year	--
Fuel	--
Cooling	--
Hours	--
Last serviced date	--
Last serviced by	--

Gearbox

Make	--
Model	--
Year	--
Reduction	--
Coupling	--
Shaft diameter	--
Propellor size	--

Capacities

Fuel	160 litres
Water	900 litres
Gas type	Propane

No. of gas cylinders	2
Gas cylinder size	--

Interior

Fitted

Fitted by	Audlem Boats
Date fitted	2013

Materials used

Floor	Oak Sealed
Hull sides	Oak Ply
Cabin sides	Oak Ply
Deckhead	Oak ply
Bulkheads	Oak Ply
Fittings	Various





Equipment

In the galley

Cooker type	CDA Cooker
Cooker model	--
Fridge type	Under counter
Fridge model	Indesit 240v
Other	--

Heating

Type	Central heating radiators
Make	Eberspacher-fitted 2020
Model	Hydronic
Fuel	Diesel
Other remarks	Under floor heating

Hot water

Type	Calorifier
Make	--
Model	--
Fuel	--
Other remarks	--
Additional heating	--

In the bathroom

Bath	--
Shower	Yes
Hip bath	--
Basin	Yes
Toilet type	Porta potti
Toilet make	Thetford
Toilet model	'Elsan chemical' 365
Toilet tank capacity	20 litres
Toilet remarks	Toilet newly fitted 2022.

Electrical systems

DC voltage	12v
No. of batteries (start)	1
No. of batteries (domestic)	1
Split charging	--
Other	Beta Diesel Generator

240 volt electrical systems

Inverter make	Victron
Inverter rating	--
Generator make	--
Generator rating	--
Shoreline	YES
Other	The boat benefits from a 25% CRT licence fee due to the boat been electrically operated

Other

Additional information

--

